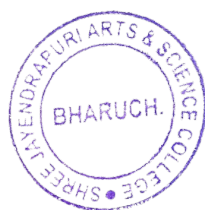



Feedback for Faculty During the Period 2022-23

To improve student's performance, it is essential that they should understand the concepts related to the subject clearly. This can be achieved through effective teaching and by establishing good relationship between students and teachers so that they feel free to ask their difficulties. Feedback is an essential part of effective learning. It is important to know student's expectations from teachers as well as the performance of the teacher from student's point of view. Considering all aspects, a feedback form was prepared and at the end of the year, the responses from the students were collected by each department.

Process (Figure: 1)

- Feedback was collected from the students during the academic sessions 2022-23.
- Students were asked to fill up the feedback forms and rate the performance of their teacher on ten parameters (mentioned in the feedback form), on a four-point scale and give their opinion by putting a tick mark in front of the box provided against each parameter.
- A copy of the feedback form is as given in the Fig:2
- The parameter for calculation is given as: (1) Excellent (2) Good (3) Satisfactory (4) Poor
- Pie chart for regular teachers of the institute is prepared for both PG and UG Classes (Fig:3).
- In feedback analysis, if there is any component with >10% in poor, Principal will take corrective measures.
- As shown in pie chart 82 % faculty received Excellent parameter, 11 % faculty received good parameter, 7 % faculty received Satisfactory parameter and 0 % faculty received Poor parameter.




I/C PRINCIPAL
SHREE JAYENDRAPURI ARTS &
SCIENCE COLLEGE, BHARUCH

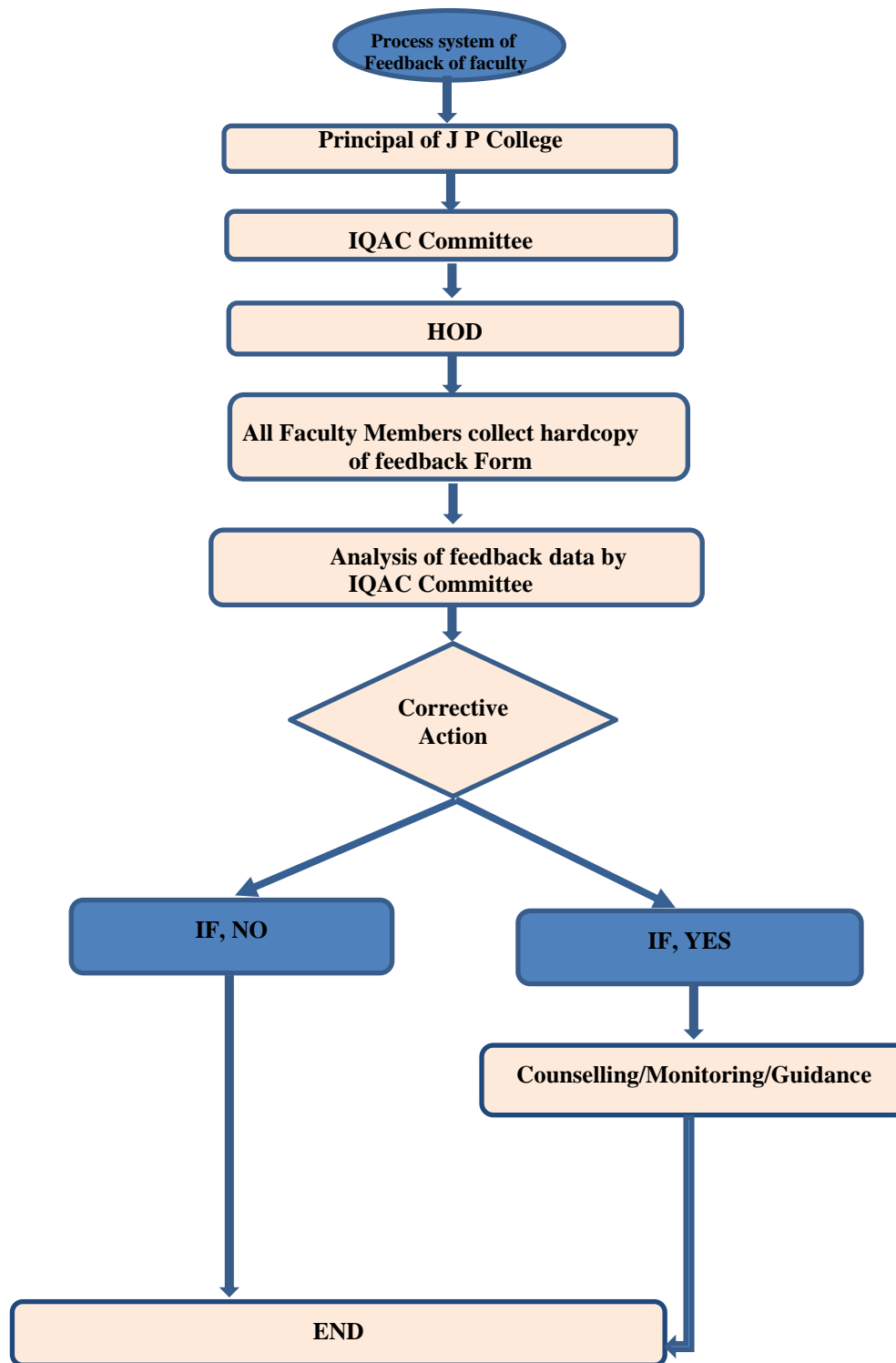
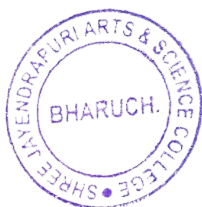


Fig: 1 Flow Chart of Process



M. S. Patil
I/C PRINCIPAL
SHREE JAYENDRAPURI ARTS &
SCIENCE COLLEGE, BHARUCH

Shree Jayendrapuri Arts and Science College, Bharuch

(RE-ACCREDITED BY NAAC WITH "B" GRADE WITH A CGPA OF 2.81)

Old National Highway No.8, BHARUCH – 392001, Gujarat – India.

Ph No. : (O) (02642) 249802, 228812

Fax No. : (02642) 228118



E-mail : jayendrapuricollege @ yahoo.in

Website: www.jpcollege.net

STUDENTS' FEEDBACK FORM ON TEACHERS (SEPARATE FOR EACH TEACHER)

Name: _____

Course: _____

Department: _____

Semester: _____

Given below is a list of questions related to Academic, Curricular Activities and Administration of the Institution. Select one option and put a tick mark (✓) on the columns provided:

Sr.No	Question	Excellent	Good	Satisfied	Poor
1	Knowledge base of the teacher (as perceived by you)				
2	Communication Skills (in terms of articulation and comprehensibility)				
3	Sincerity / Commitment of the teacher				
4	Interest generated by the teacher				
5	Ability to integrate course material with environment/other issues, to provide a broader perspective				
6	Ability to integrate content with other courses				
7	Accessibility of the teacher in and out of the class (includes availability of the teacher to motivate further study and discussion outside class)				
8	Ability to design quizzes /tests /assignments / examinations and projects to evaluate students understanding of the course				
9	Provision of sufficient time for feedback				
10	Overall rating?				

Any Other Comments:

Place: _____

Signature: _____

Date: _____

JPC/ Students' Feedback Form (Institution/Course)

2



gward
(DR. N. M. PATEL)
PRINCIPAL
SHREE JAYENDRAPURI ARTS & SCIENCE COLLEGE, BHARUCH

Fig 2 : Copy of the feedback form

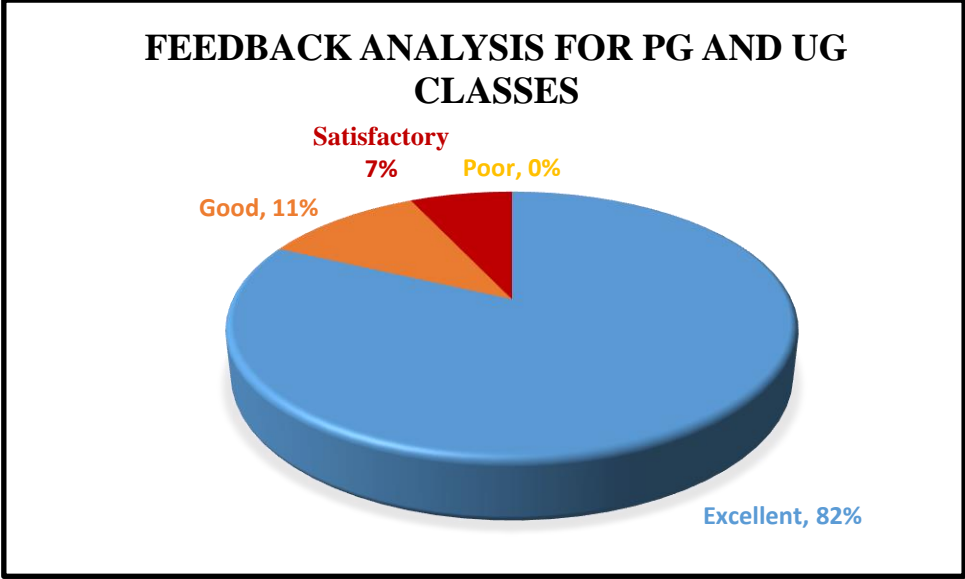
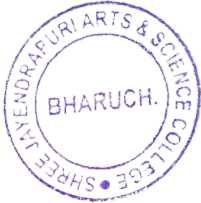


Fig 3: Pie Chart



M. Patil
**I/C PRINCIPAL
SHREE JAYENDRAPURI ARTS &
SCIENCE COLLEGE, BHARUCH**